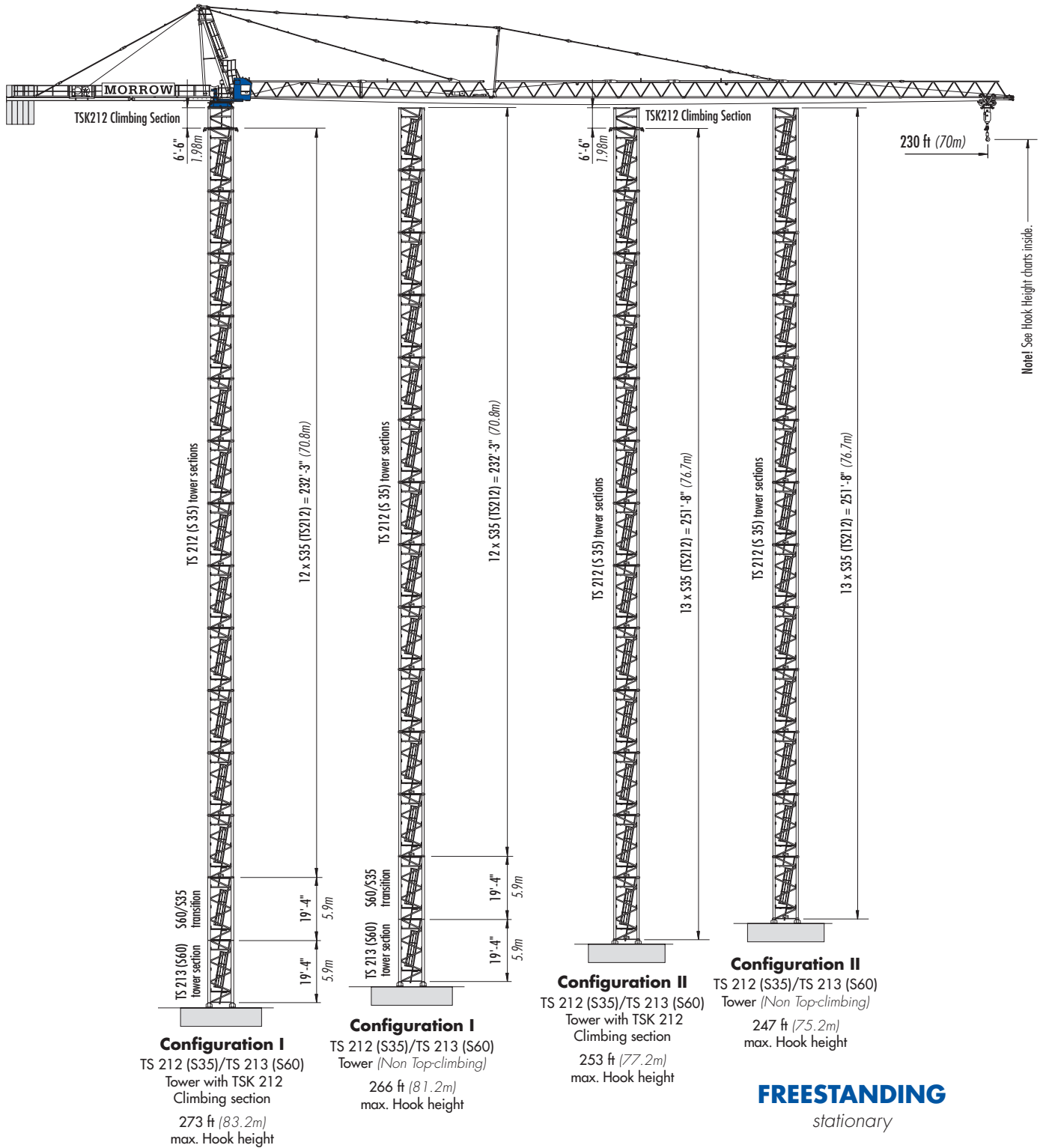


Peiner SK 315-16

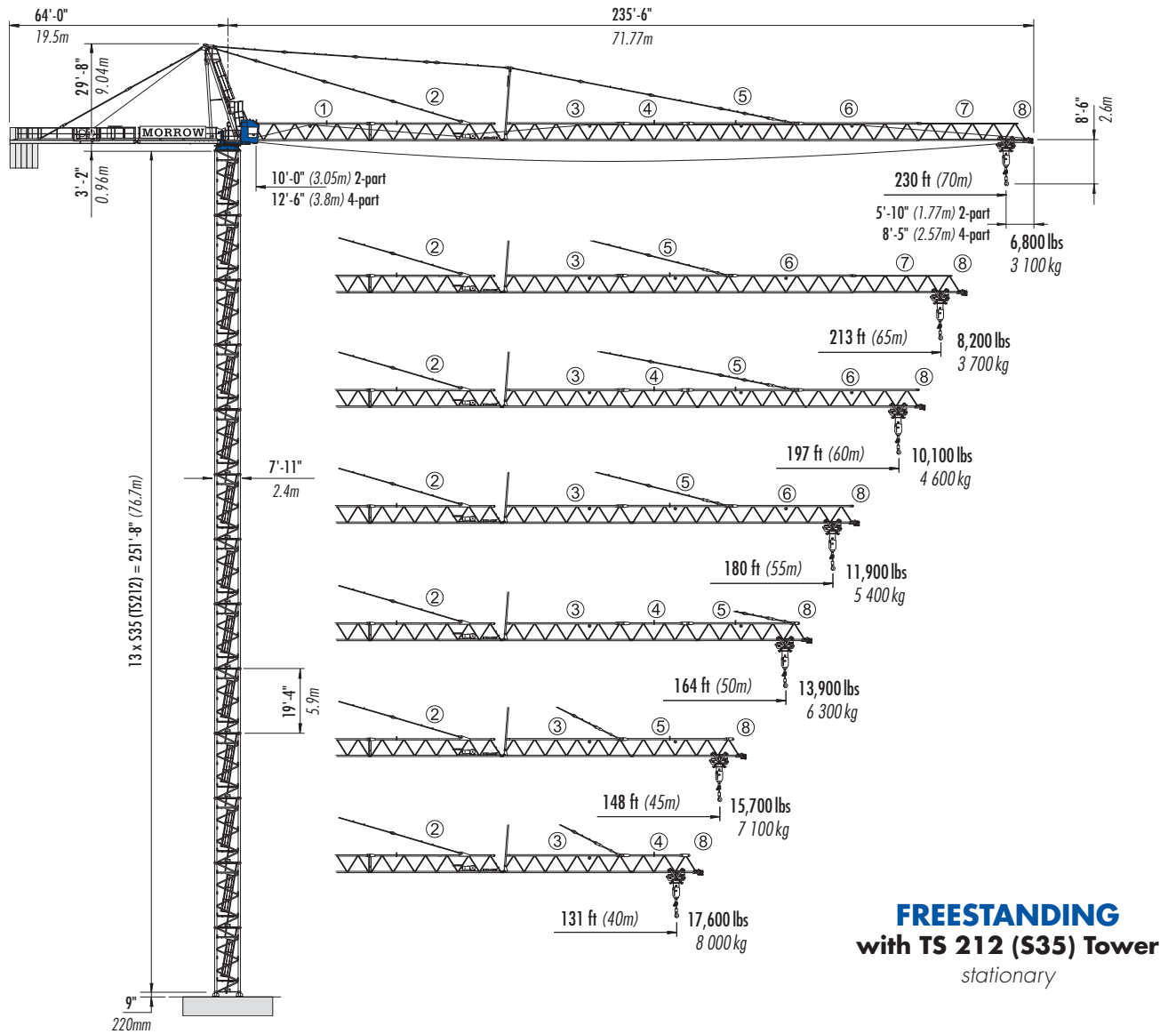
TOWER CRANE



Morrow Equipment

Peiner SK 315-16

Jib Layout



Counterweights

102 hp Hoist Unit

230-ft Jib	213-ft Jib	197-ft Jib	180-ft Jib	164-ft Jib	148-ft Jib	131-ft Jib
AAAAA	BBAAA	AAAAB	BBBAA	AAAA•	BBAA•	ABBB•
45,750 lbs	41,340 lbs	43,540 lbs	39,120 lbs	36,600 lbs	32,180 lbs	29,970 lbs
20 750 kg	18 750 kg	19 750 kg	17 750 kg	16 600 kg	14 600 kg	13,600 kg

NOTE! Counterweight information above applies to 2-part and 4-part operation. Weight of the A Block is 9,150 lbs (4150 kg); wt. of the B Block is 6,940 lbs (3150 kg). Counterweights must be installed from rear to front, i.e. towards the tower. It is recommended that the weight of each counterweight be verified before installation. Counterweight figures displayed in chart above are for VWB 76 102 hp hoist unit. If another hoist unit is installed, refer to the Pecco SK 315-16 Operation Manual or contact Morrow.

IMPORTANT! SK 315 counterjib equipped with 5 counterweight block mounting slots. The "•" indicates an empty slot.

Peiner SK 315-16

Hook Heights

Alternate tower combinations are possible. Refer to Operation manual or contact Morrow for information.

Configuration I ^{2,3,4}					
SK 315 on TS 212 (S 35) and TS 213 (S 60) tower					
No. of Tower Sections	Tower Section Type	Non Top-climbing Configuration without TSK 212 climbing section installed		Top-climbing Configuration TSK 212 climbing section required	
		feet	meters	feet	meters
1	TS213 (S60)	15	4.5	21	6.5
2	S60/S35 transition	34	10.4	41	12.4
3	TS212 (S35)	53	16.3	60	18.3
4	TS212 (S35)	73	22.2	79	24.2
5	TS212 (S35)	92	28.1	99	30.1
6	TS212 (S35)	112	34	118	36
7	TS212 (S35)	131	39.9	137	41.9
8	TS212 (S35)	150	45.8	157	47.8
9	TS212 (S35)	170	51.7	176	53.7
10	TS212 (S35)	189	57.6	196	59.6
11	TS212 (S35)	208	63.5	215	65.5
12	TS212 (S35)	228	69.4	234	71.4
13 ¹	TS212 (S35)	247	75.3	254	77.3
14 ^{1,3}	TS212 (S35)	266	81.2	273	83.2

Configuration II ^{2,4}					
SK 315 on TS 212 (S 35) tower					
No. of Tower Sections	Tower Section Type	Non Top-climbing Configuration without TSK 212 climbing section		Top-climbing Configuration TSK 212 climbing section required	
		feet	meters	feet	meters
1	TS212 (S35)	14	4.4	21	6.4
2	TS212 (S35)	34	10.3	40	12.3
3	TS212 (S35)	53	16.2	60	18.2
4	TS212 (S35)	73	22.1	79	24.1
5	TS212 (S35)	92	28	98	30
6	TS212 (S35)	111	33.9	118	35.9
7	TS212 (S35)	131	39.8	137	41.8
8	TS212 (S35)	150	45.7	156	47.7
9	TS212 (S35)	169	51.6	176	53.6
10	TS212 (S35)	189	57.5	195	59.5
11	TS212 (S35)	208	63.4	215	65.4
12	TS212 (S35)	227	69.3	234	71.3
13 ¹	TS212 (S35)	247	75.2	253	77.2

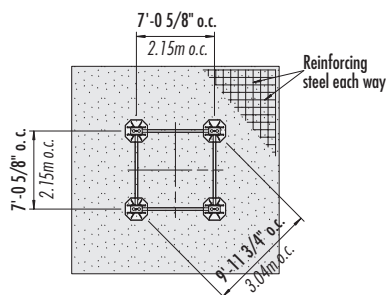
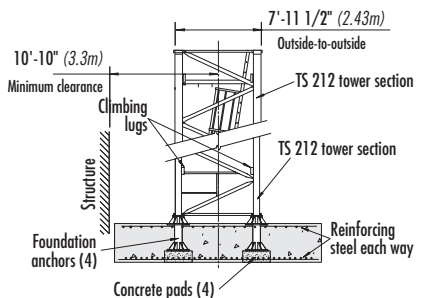
¹ Lower top climbing unit to base of tower prior to operating crane.

² Hook heights for cross base and rail-travelling crane configurations available upon request.

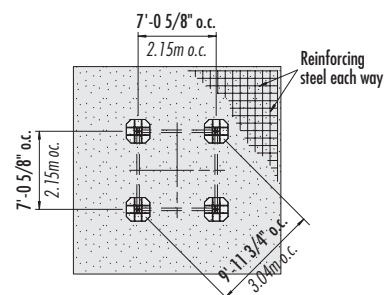
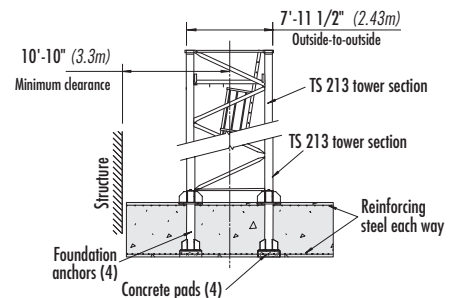
³ For jib lengths 131 ft (40m) and 148 ft (45m) ONLY. Jibs from 164 ft (50m) to 230 ft (70m) have max. HUH of 247 ft (75.3m).

⁴ If top climbing configuration is required, a TSK212 climbing section 6'-8" (2.02m) MUST be installed.

Foundation Details *on concrete footing*



with TS 212 (S35) Tower

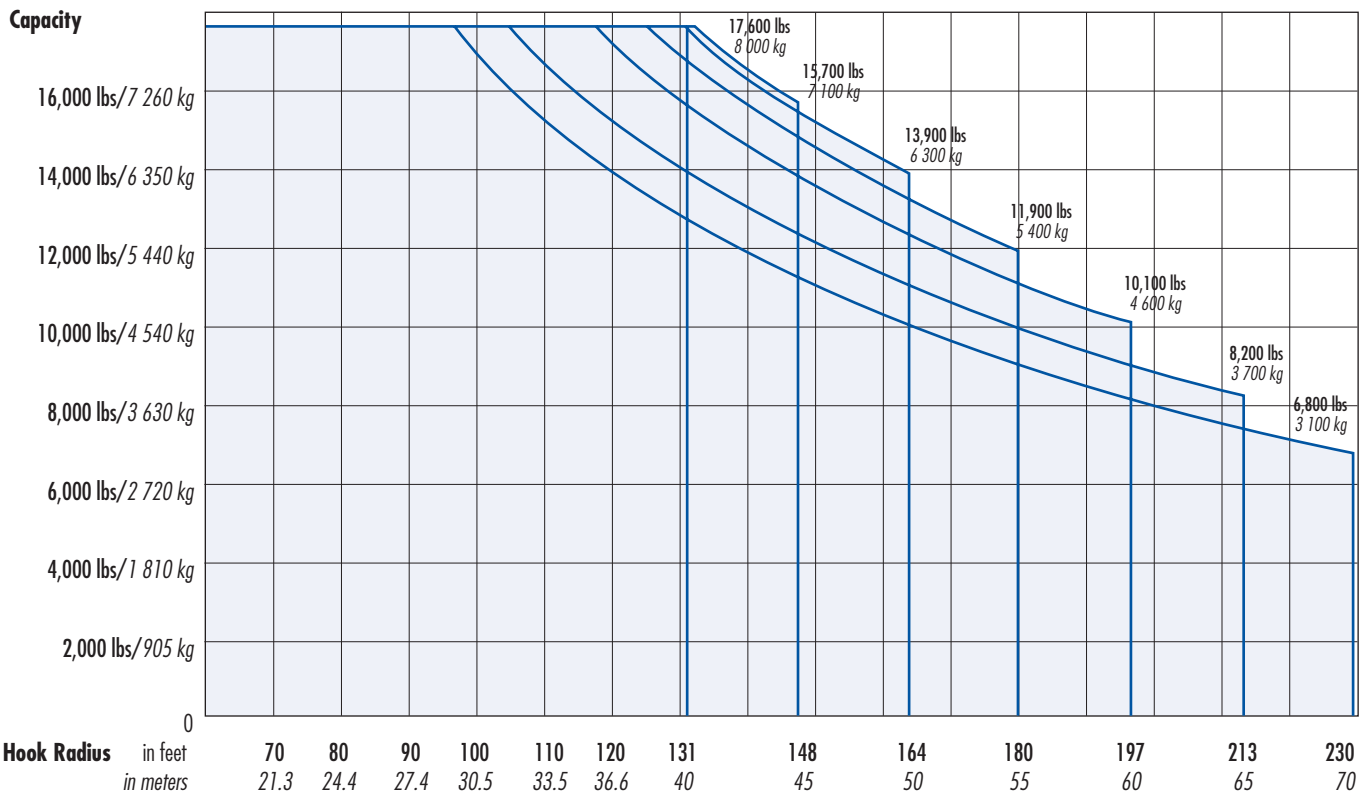


with TS 213 (S60) Tower

Peiner SK 315-16

Radius and Capacities for 2-part operation

Hook Radius	2-Part Line Max capacity – Radius	ft m	76 23	82 25	98 30	115 35	131 40	141 43	148 45	158 48	164 50	174 53	180 55	190 58	197 60	207 63	213 65	223 68	230 70
230 ft 70m	17,600 lbs – 97 ft 8 000 kg – 29.5m	lbs kg	17,600 8 000	17,600 8 000	17,400 7 900	14,800 6 700	12,800 5 800	11,900 5 400	11,200 5 100	10,600 4 800	10,100 4 600	9,500 4 300	9,000 4 100	8,600 3 900	8,200 3 700	7,700 3 500	7,500 3 400	7,100 3 200	6,800 3 100
213 ft 65m	17,600 lbs – 105 ft 8 000 kg – 32m	lbs kg	17,600 8 000	17,600 8 000	17,600 8 000	16,100 7 300	13,900 6 300	13,000 5 900	12,300 5 600	11,500 5 200	11,100 5 000	10,400 4 700	9,900 4 500	9,300 4 200	8,800 4 000	8,600 3 900	8,200 3 700		
197 ft 60m	17,600 lbs – 118 ft 8 000 kg – 35.9m	lbs kg	17,600 8 000	17,600 8 000	17,600 8 000	17,600 8 000	15,700 7 100	14,600 6 600	13,900 6 300	13,000 5 900	12,300 5 600	11,700 5 300	11,200 5 100	10,600 4 800	10,100 4 600				
180 ft 55m	17,600 lbs – 125 ft 8 000 kg – 38.0m	lbs kg	17,600 8 000	17,600 8 000	17,600 8 000	17,600 8 000	16,800 7 600	15,400 7 000	14,800 6 700	13,900 6 300	13,200 6 000	12,300 5 600	11,900 5 400						
164 ft 50m	17,600 lbs – 131 ft 8 000 kg – 40m	lbs kg	17,600 8 000	17,600 8 000	17,600 8 000	17,600 8 000	17,600 8 000	16,300 7 400	15,400 7 000	14,600 6 600	13,900 6 300								
148 ft 45m	17,600 lbs – 132 ft 8 000 kg – 40.2m	lbs kg	17,600 8 000	17,600 8 000	17,600 8 000	17,600 8 000	17,600 8 000	16,500 7 500	15,700 7 100										
131 ft 40m	17,600 lbs – 131 ft 8 000 kg – 40m	lbs kg	17,600 8 000	17,600 8 000	17,600 8 000	17,600 8 000	17,600 8 000												

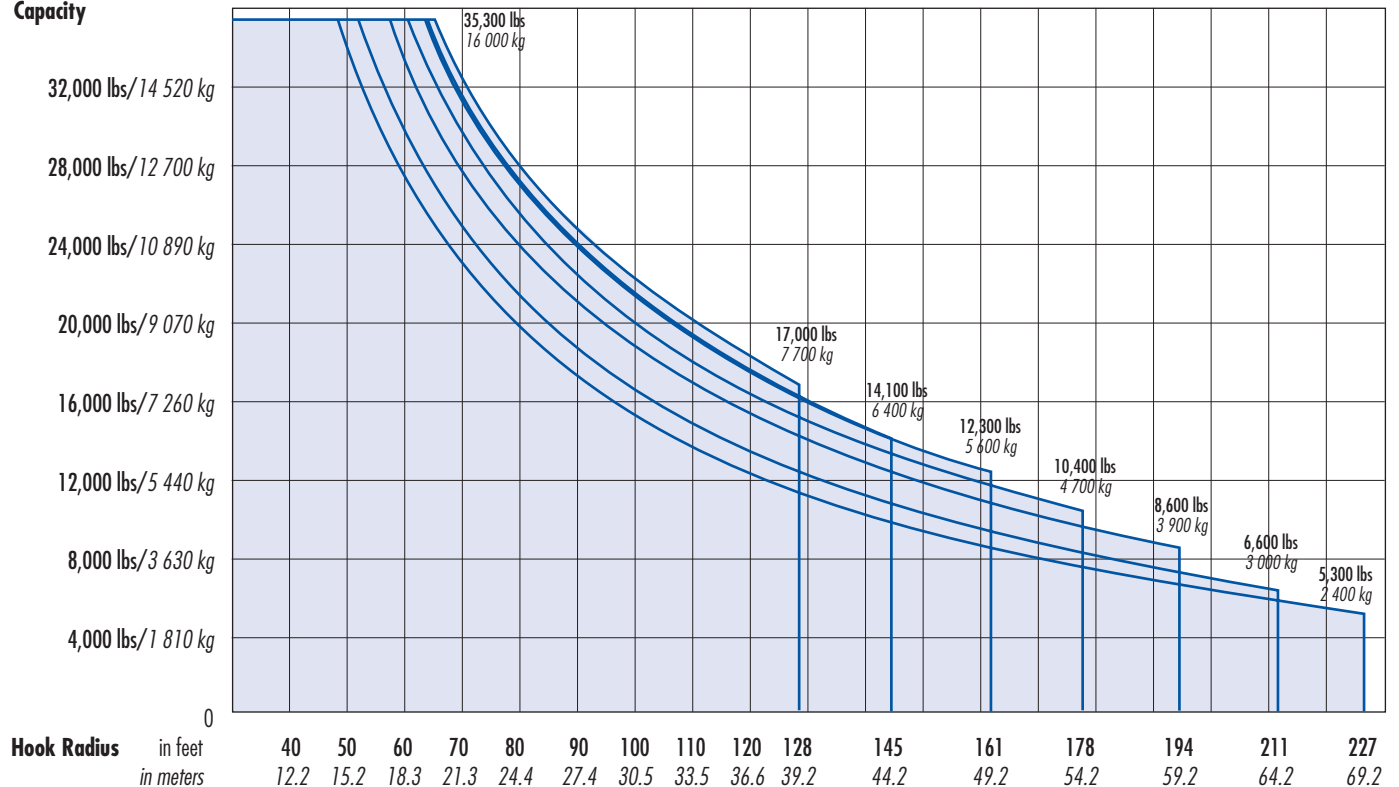


Peiner SK 315-16

Radius and Capacities for 4-part operation

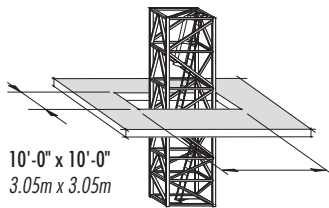
Hook Radius	4-Part Line Max capacity – Radius	ft m	76 23	82 25	98 30	115 35	129 39.2	141 43	145 44.2	158 48	161 49.2	174 53	178 54.2	190 58	194 59.2	207 63	211 64.2	223 68	227 69.2
227 ft 69.2m	35,300 lbs – 49 ft 16 000 kg – 14.8m	lbs kg	21,800 9 900	19,600 8 900	16,100 7 300	13,200 6 000	11,200 5 100	10,400 4 700	9,700 4 400	9,000 4 100	8,600 3 900	7,900 3 600	7,500 3 400	7,100 3 200	6,600 3 000	6,200 2 800	6,000 2 700	5,500 2 500	5,300 2 400
211 ft 64.2m	35,300 lbs – 52 ft 16 000 kg – 15.9m	lbs kg	23,800 10 800	21,600 9 800	17,400 7 900	14,600 6 600	12,600 5 700	11,500 5 200	10,800 4 900	9,900 4 500	9,500 4 300	8,800 4 000	8,400 3 800	7,700 3 500	7,500 3 400	6,800 3 100	6,600 3 000		
194 ft 59.2m	35,300 lbs – 58 ft 16 000 kg – 17.6m	lbs kg	26,900 12 200	24,500 11 100	19,800 9 000	16,800 7 600	14,300 6 500	13,000 5 900	12,300 5 600	11,500 5 200	10,800 4 900	10,100 4 600	9,700 4 400	9,000 4 100	8,600 3 900				
178 ft 54.2m	35,300 lbs – 61 ft 16 000 kg – 18.6m	lbs kg	28,700 13 000	26,000 11 800	21,200 9 600	17,900 8 100	15,200 6 900	14,100 6 400	13,200 6 000	12,300 5 600	11,700 5 300	10,800 4 900	10,400 4 700						
161 ft 49.2m	35,300 lbs – 63 ft 16 000 kg – 19.4m	lbs kg	30,200 13 700	27,300 12 400	22,300 10 100	18,700 8 500	16,100 7 300	14,800 6 700	14,100 6 400	12,800 5 800	12,300 5 600								
145 ft 44.2m	35,300 lbs – 64 ft 16 000 kg – 19.5m	lbs kg	30,400 13,800	27,600 12 500	22,500 10 200	19,000 8 600	16,300 7 400	15,000 6 800	14,100 6 400										
129 ft 39.2m	35,300 lbs – 66 ft 16 000 kg – 20.2 m	lbs kg	31,700 14 400	28,700 13 000	23,600 10 700	19,800 9 000	17,000 7 700												

Capacity



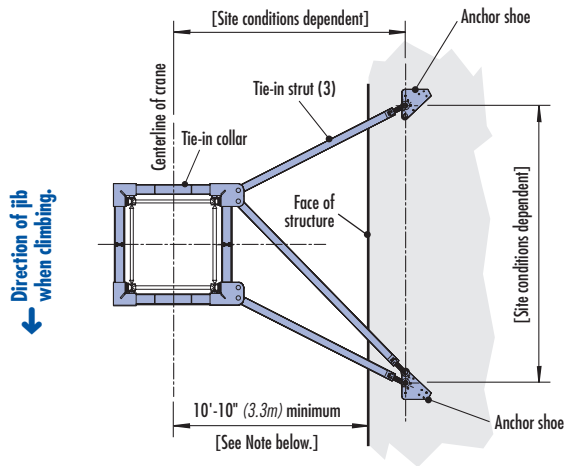
Tie-in Details

NOTE! Recommended slab opening for erection and dismantlement. For other factors including deflection, contact Morrow engineering.



SLAB OPENING

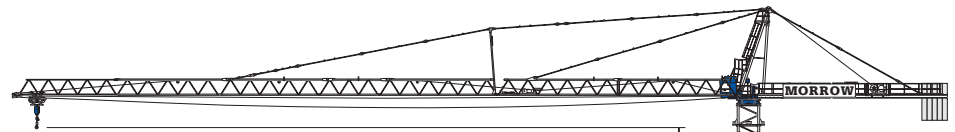
Recommended
(TS 212/S35)



TIE-IN ASSEMBLY with TS 212 (S35) Tower plan view

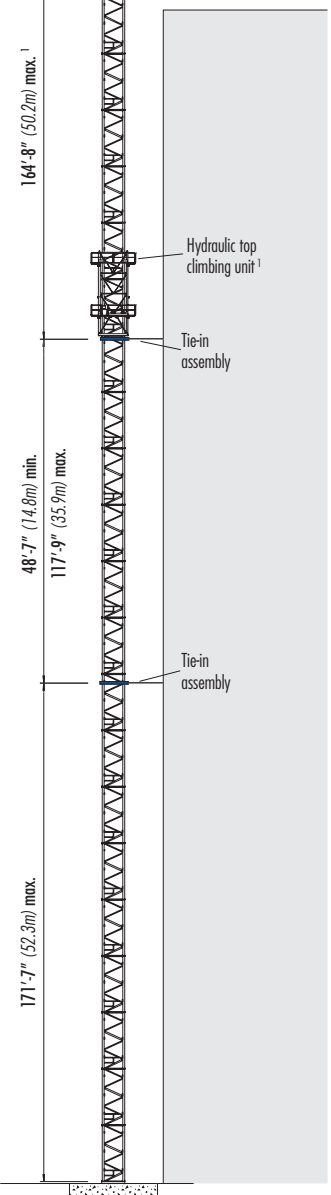
NOTE! The tie-in assembly shown is an example of a typical installation when using TS 212 (S35) tower. Please note, however, that factors determining the installation of tie-in assemblies may vary due to project specific requirements. Contact Morrow for additional information.

Consult SK 315-16 Operation Manual before erecting, operating, servicing or dismantling crane.



NOTE! Restrictions apply; please consult operation manual or Morrow engineering.

¹ Lower top climbing unit to upper tie-in assembly prior to operating crane.



TOP CLIMBING with TS 212 (S35) Tower tied to structure

Peiner SK 315-16

Hoist Speed and Capacity

Hoist Unit	SR WB 76 - 63/4F	2-Part Line			
102 hp (76 kW) AC hoist unit 4-speed gearbox Remote-controlled gear shifting Eddy current brake 2P215 4P107	Gear	Capacity	Hook Speed	Capacity	Hook Speed
	1	up to 17,600 lbs	@ 112 fpm	up to 8 000 kg	@ 34 m/min
	2	up to 13,890 lbs	@ 178 fpm	up to 6 300 kg	@ 54 m/min
	3	up to 9,260 lbs	@ 276 fpm	up to 4 200 kg	@ 84 m/min
	4	up to 5,510 lbs	@ 440 fpm	up to 2 500 kg	@ 134 m/min
	4-Part Line				
	1	up to 35,300 lbs	@ 56 fpm	up to 16 000 kg	@ 17 m/min
	2	up to 27,780 lbs	@ 89 fpm	up to 12 600 kg	@ 27 m/min
	3	up to 18,520 lbs	@ 138 fpm	up to 8 400 kg	@ 42 m/min
	4	up to 11,020 lbs	@ 220 fpm	up to 5 000 kg	@ 67 m/min

IMPORTANT! Capacities and hook speeds indicated will vary depending on the amount of hoist rope installed. This crane model may be equipped with a hoist unit other than that specified in the data above. To verify, check the serial number of the crane and refer to the SK 315-16 Operation Manual for additional information.

Motor Information

Drive Unit	Horsepower	Kilowatts	Speed	
Trolley (VFD)	10.1 hp	7.5 kW	0 – 290 fpm	0 – 88 m/min
Swing	2 x 11.3 hp	2 x 8.4 kW	0.9 rpm	

Power Requirements

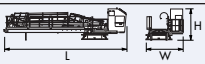
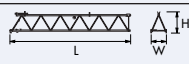
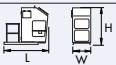
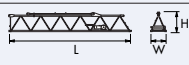
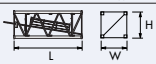
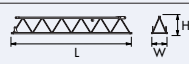
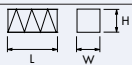
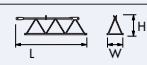
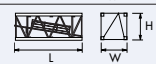
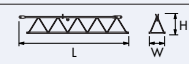
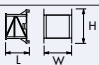
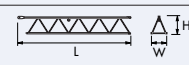

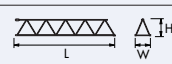
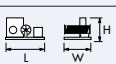
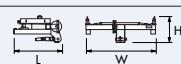
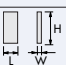
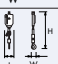
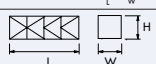

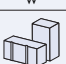

- 480 V phase-phase, 277 V each phase to ground with 120° phase shift between phases. Do not use an Open-Delta supply.
- 3-phase, 60 Hz power supply plus ground wire.
- Static: 160 Amperes, 132 kVA
- Travelling: (Contact Morrow for power requirements.)

NOTE! Consult crane Operation Manual before erecting, operating, servicing or dismantling crane.

Specifications subject to change without prior notice. For additional information, contact Morrow Equipment.

Peiner SK 315-16

NOTE! Weights and dimensions are approximate. Scale all components before installing. Please consult SK 315-16 Operation Manual before erecting, operating, servicing and dismantling crane or crane components. Specifications are subject to change without prior notification. Contact Morrow Equipment for additional information.

Description	Dimensions L x W x H	Weight	Description	Dimensions L x W x H	Weight
Turntable (Complete) ¹	 36'-5" x 7'-8" x 7'-10" 11.1m x 2.33m x 2.38m	25,350 lbs 11 500 kg	Jib Section ①	 39'-0" x 5'-0" x 5'-10" 11.89m x 1.52m x 1.78m	3,790 lbs 1 720 kg
Cab with Access Platform	 10'-2" x 4'-11" x 7'-3" 3.1m x 1.5m x 2.21m	1,320 lbs 600 kg	Jib Section ②	 38'-8" x 5'-0" x 6'-2" 11.78m x 1.52m x 1.88m	4,320 lbs 1 960 kg
Tower Section S35 (TS212)	 19'-6" x 7'-9" x 8'-0" 5.95m x 2.37m x 2.45m	8,900 lbs 4 040 kg	Jib Section ③ ⁴	 39'-2" x 5'-0" x 7'-1" 11.94m x 1.52m x 2.16m	4,230 lbs 1 920 kg
Transition Section S60 to S35	 19'-5" x 7'-11" x 7'-11" 5.92m x 2.41m x 2.41m	9,930 lbs 4 500 kg	Jib Section ④	 19'-2" x 5'-0" x 5'-5" 5.85m x 1.52m x 1.65m	1,765 lbs 800 kg
Tower Section S60 (TS213)	 19'-5" x 7'-11" x 7'-11" 5.92m x 2.41m x 2.41m	9,930 lbs 4 500 kg	Jib Section ⑤	 35'-4" x 5'-0" x 5'-5" 10.77m x 1.52m x 1.66m	3,085 lbs 1 400 kg
Tower Section TSK212	 6'-8" x 7'-10" x 9'-10" 2.02m x 2.4m x 3.0m	6,175 lbs 2 800 kg	Jib Section ⑥	 36'-0" x 5'-0" x 5'-6" 10.98m x 1.52m x 1.67m	2,470 lbs 1 120 kg
Counterjib ² (Outer Sect.)	 38'-1" x 7'-2" x 6'-0" 11.6m x 2.18m x 1.83m	14,550 lbs 6 600 kg	Jib Section ⑦	 33'-4" x 5'-0" x 5'-4" 10.16m x 1.52m x 1.62m	1,565 lbs 710 kg
Hoist Unit ³ (106 hp/79 kW)	 7'-6" x 5'-5" x 3'-3" 2.29m x 1.66m x 1.0m	5,400 lbs 2 450 kg	Jib Section ⑧	 3'-1" x 5'-1" x 1'-8" 0.95m x 1.53m x 0.5m	310 lbs 140 kg
Counterweight Block A	 3'-11" x 1'-8" x 12'-1" 1.2m x 0.5m x 3.69m	9,150 lbs 4 150 kg	Jib Assembly Part 1 ⁵ for all Jib Assemblies	①② 76'-1" x 5'-0" x 6'-2" 23.2m x 1.52m x 1.88m	11,245 lbs 5 100 kg
Counterweight Block B	 3'-11" x 1'-8" x 9'-4" 1.2m x 0.5m x 2.84m	6,945 lbs 3 150 kg	Jib Assembly Part 2 ⁶ 230-ft (70.0m)	③④⑤⑥⑦⑧ 155'-5" x 5'-1" x 7'-1" 47.37m x 1.53m x 2.16m	16,315 lbs 7 400 kg
2-Part Trolley (Outer)	 5'-7" x 6'-11" x 4'-3" 1.7m x 2.11m x 1.28m	1,100 lbs 500 kg	Jib Assembly Part 2 ⁶ 213-ft (65.0m)	③⑤⑥⑦⑧ 139'-0" x 5'-1" x 7'-1" 42.37m x 1.53m x 2.16m	14,550 lbs 6 600 kg
Hook Block	 1'-6" x 7" x 7'-4" 0.46m x 0.18m x 2.24m	650 lbs 295 kg	Jib Assembly Part 2 ⁶ 197-ft (60.0m)	③④⑤⑥⑧ 122'-7" x 5'-1" x 7'-1" 37.37m x 1.53m x 2.16m	14,770 lbs 6 700 kg
Top Climbing Unit with Hydraulics (S35/TS212)	 29'-3" x 11'-6" x 11'-6" 8.9m x 3.5m x 3.5m	24,750 lbs 11 230 kg	Jib Assembly Part 2 ⁶ 180-ft (55.0m)	③⑤⑥⑧ 106'-2" x 5'-1" x 7'-1" 32.37m x 1.53m x 2.16m	13,005 lbs 5 900 kg
Tie-n Collar (S35/TS212)	 11'-1" x 1'-0" x 9'-11" 3.37m x 0.3m x 3.02m	4,000 lbs 1 815 kg	Jib Assembly Part 2 ⁶ 164-ft (50.0m)	③④⑤⑧ 89'-10" x 5'-1" x 7'-1" 27.37m x 1.53m x 2.16m	12,565 lbs 5 700 kg
Miscellaneous Accessories	 3'-0" x 3'-0" x 2'-6" 0.91m x 0.91m x 0.76m	4,800 lbs 2 170 kg	Jib Assembly Part 2 ⁶ 148-ft (45.0m)	③⑤⑧ 73'-5" x 5'-1" x 7'-1" 22.37m x 1.53m x 2.16m	10,140 lbs 4 600 kg
Foundation Anchor (4x) (S35/TS212)	 3'-2" x 2'-0" x 2'-0" 0.97m x 0.61m x 0.61m	3,400 lbs 1 540 kg	Jib Assembly Part 2 ⁶ 131-ft (40.0m)	③④⑧ 57'-0" x 5'-1" x 7'-1" 17.37m x 1.53m x 2.16m	9,260 lbs 4 200 kg

¹ Turntable (Complete) includes tower top, counterjib inner section, operator's cab, swing motors, slew ring and slewing ring support.

² Includes counterjib outer section, 102 hp (76 kW) AC hoist unit with frame, electrical panels and handrails. Does not include wire rope.

³ Includes frame and electrical panels. Does not include wire rope.

⁴ Jib Section 3 includes jib section plus A-frame. Weight of jib section #3 is reduced approximately 880 lbs (400 kg) if A-frame is removed.

⁵ Jib Assembly Part 1 includes jib sections, pendants, trolley drive unit, trolley wire rope.

⁶ Jib Assembly Part 2 includes jib sections, trolley (outer), hook assembly and pendants. If 4-part application is used, weight increases by 2,105 lbs (955 kg) for additional trolley (inner) and hook block.



Morrow Equipment

COMPANY, L. L. C.

3218 Pringle Road SE • P O Box 3306 • Salem, Oregon 97302 USA
503 585 5721 • Fax 503 363 1172 • www.morrow.com • info@morrow.com

Atlanta, GA • Myrtle Beach, SC • Chicago, IL • Dallas, TX • Denver, CO • Honolulu, HI • Houston, TX • Los Angeles, CA • Las Vegas, NV
Millwood, NY • St. Louis, MO • San Francisco, CA • Seattle, WA • Miami, FL • Pensacola, FL • Tampa, FL • Washington, DC
Sydney, Australia • Brisbane, Australia • Wellington, New Zealand • Vancouver, BC, Canada • Toronto, Canada • Mexico City, Mexico